

TransParent – Sweden

Marie Evertsson and Katarina Boye
Swedish Institute for Social Research (SOFI)
Stockholm University



The agenda

- Where Sweden is today and how we got there
- Labor force participation and gender equality
- Fertility
- The parental leave insurance
- Child care
- Quantitative data sets
- The qualitative study - Katarina

Sweden – The most Gender Equal Country in the World?

1 in the world when GDI as % of HDI is used to measure gender disparity

1 in the world when the Gender Empowerment Measure (GEM) is used to rank countries

Source: UNDP Human Development Report 2008

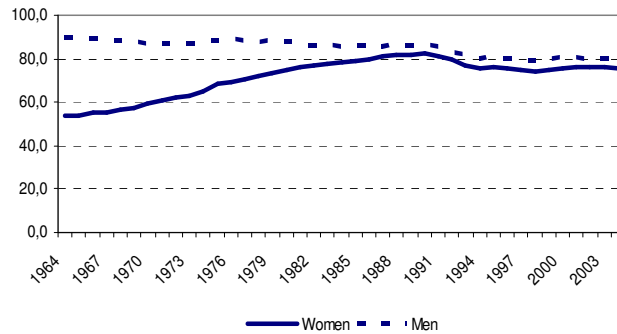
3

How did we get there?

- Special women's wages were abandoned in 1965
- Separate (individual) taxation (1971)
- The parental leave insurance (1974)
- Expansion of the public sector and high quality subsidized childcare

4

Labour force participation rates

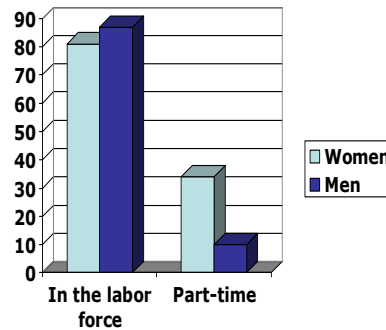


Source: Swedish Labor Force Survey (AKU), Statistics Sweden

5

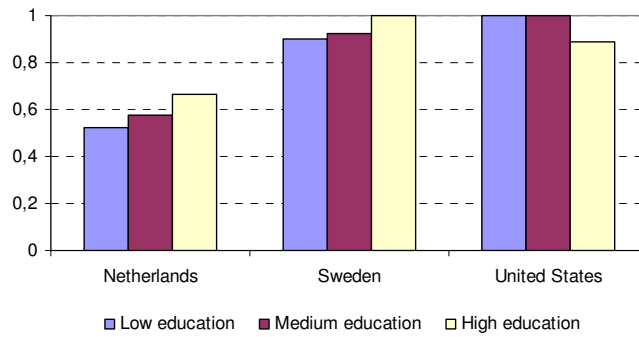
In the labor force and part-time work in 2007, age 20-64

- 81% of the women are in the labor force compared to 87% of the men
- 34% of all employed women work part-time compared to 10% of men



6

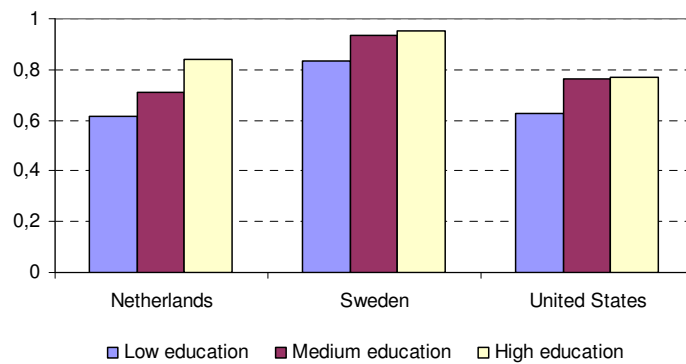
Figure 4. Ratio of women's to men's median hours worked for pay per week for employed married/cohabiting 20-54 years of age with children < 18



Source: Evertsson et al. (2009) "Is Gender Inequality Greater at Lower or Higher Educational Levels?" *Social Politics* 16(2): 210-241

7

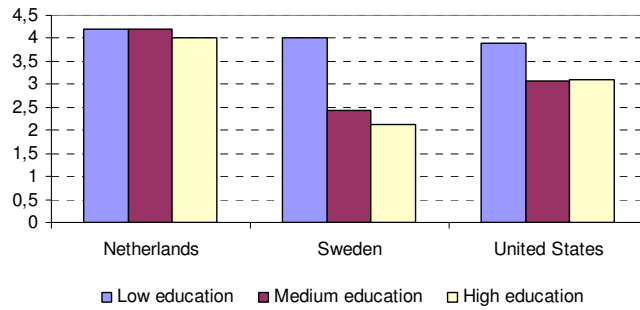
Figure 2. Ratio of women's to men's labor force participation rate



Source: Evertsson et al. (2009) "Is Gender Inequality Greater at Lower or Higher Educational Levels?" *Social Politics* 16(2): 210-241

8

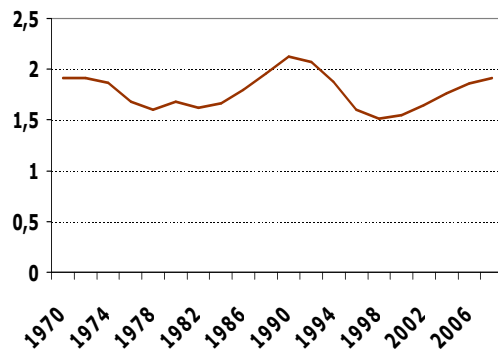
Figure 8. Ratio of women's to men's median hours per week of household work. Child care excluded.



Source: Evertsson et al. (2009) "Is Gender Inequality Greater at Lower or Higher Educational Levels?" *Social Politics* 16(2): 210-241

9

Total fertility rate



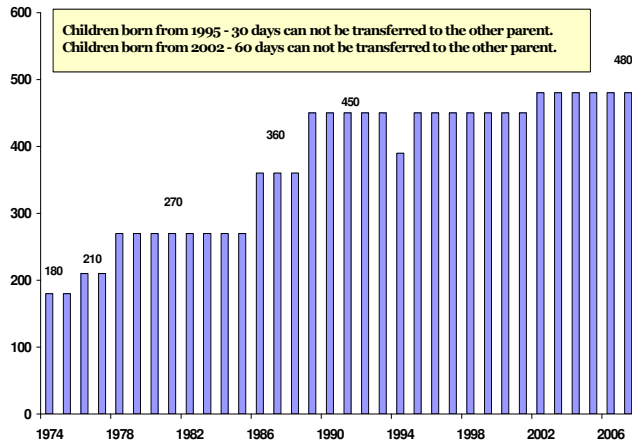
TFR in 2008

1,91

Average age
at first birth

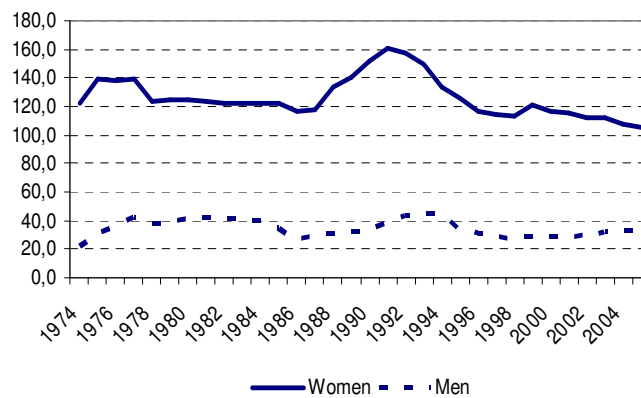
28,9

10



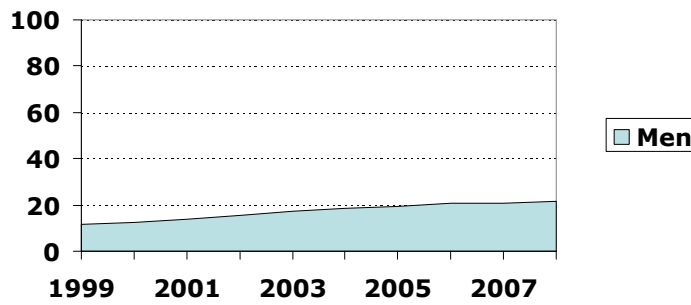
Source: Swedish Social Insurance Agency (Försäkringskassan)

Average yearly number of parental leave days



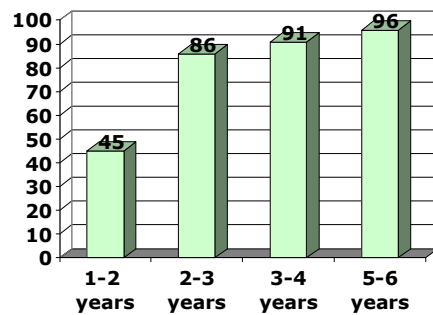
Source: Swedish Social Insurance Agency (Försäkringskassan)

Men's share of all parental leave days



13

Children in licensed childcare in 2006 (Source: OECD, *Starting Strong II*)



14

Data sets

- The Swedish Level of Living Survey
- 1/1000 of the Swedish population aged 18-75
- Retrospective biographies on changes in family composition, educational qualifications and work
- Data ends in 2000
- New survey this year

15

Register data

- The STAR data base
- Data from 1968 – 2007
- Everyone registered in Sweden on December 31 each year, 16 years of age and older
- Yearly information

16