

# Report from the German INAP-Study Methods and Preliminary Results

Dipl.-Soz. Anna Dechant (ifb)

TransParent Workshop - Amsterdam, April 8-9 2010

# Overview

- Starting Point
- Some Background Information about Germany
- The Project
- Analyzing Methods
- Exemplary (Preliminary) Results
- Conclusion

Starting Point

# Starting point

Some  
Background  
Information  
about Germany

The Project

Analyzing  
Methods

Exemplary  
(Preliminary)  
Results

Conclusion

- Beginning of marriage: almost equal division of household labor in ~ half of the couples
- Course of marriage → more traditional arrangements
- Increasing marriage duration → declining propensity to change an existing arrangement
- Intensification of this tendency by the transition to parenthood
- Cf. Grunow, Schulz, Bossfeld (2007)

Starting Point

# Some background information about Germany

Some  
Background  
Information  
about Germany

Legislation as important for interviewed couples

The Project

Analyzing  
Methods

Exemplary  
(Preliminary)  
Results

Conclusion

- Maternity leave:
  - 6 weeks before and 8 weeks after birth
- Child-raising allowance:
  - depends on income
  - max. 307€ for 24 months or 460€ for 12 months
  - To some extent additional benefits from the states
- Parental leave:
  - max. 36 months
  - max. 12 months for flexible use (child 3-8 yrs old)
  - can be used by mother/father or simultaneously
  - working part-time (max. 30 hrs/week) is possible

Starting Point

# Some background information about Germany

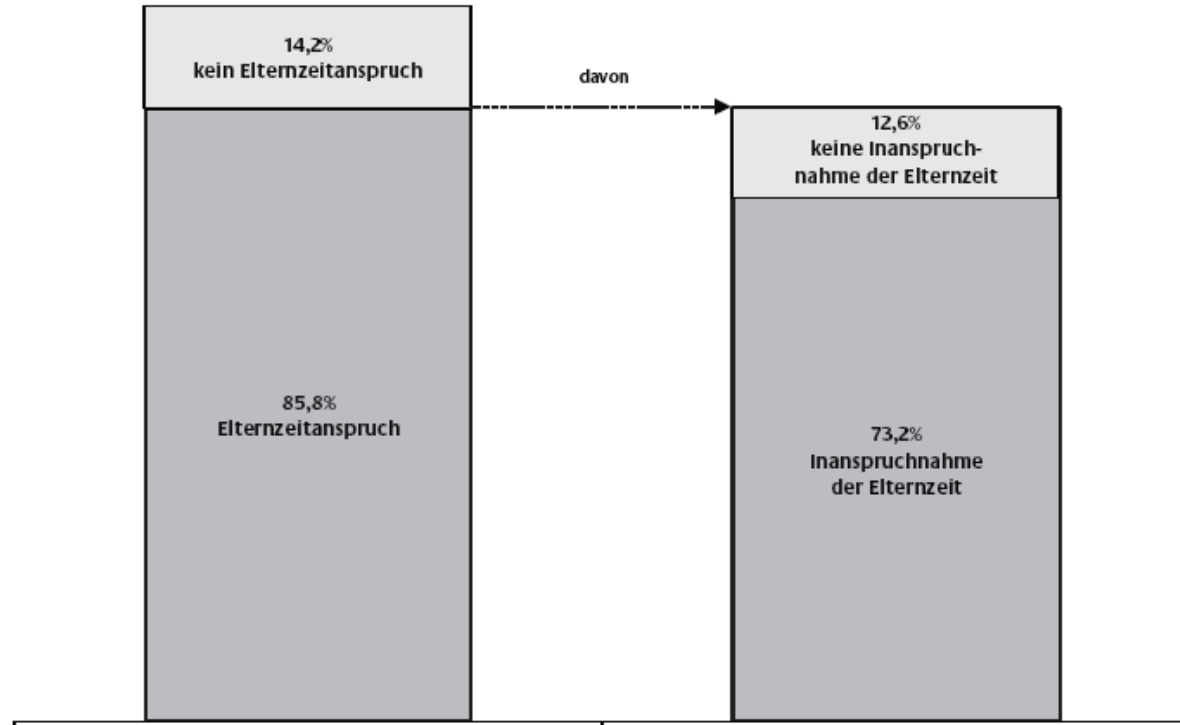
Some Background Information about Germany

## Entitlement and use of parental leave

The Project

Analyzing Methods

Exemplary (Preliminary) Results



Elternzeitanspruch: Mindestens eine Person im Haushalt ist nach §15 BErzGG anspruchsberechtigt.  
Inanspruchnahme der Elternzeit: Mindestens eine Person im Haushalt nimmt die Elternzeit in Anspruch.  
Quelle: Repräsentativbefragung 2003, n = 725

empirica

Conclusion

Source: BMFSFJ 2004: 12.

Starting Point

# Some background information about Germany

Some Background Information about Germany

## Duration of parental leave after the birth of the first child

The Project

	West	Ost
bis 6 Monate	13	5
7-12 Monate	19	23
13-24 Monate	27	41
25-36 Monate	37	29
länger als 36 Monate	4	2
gesamt	100	100

Analyzing Methods

Datenbasis: Repräsentativbefragung 2000; n=1.089

Quelle: IAB-Projekt 3-523, 2000, Beckmann/Kurtz, 10/2001: 3

Exemplary (Preliminary) Results

Source: BMFSFJ 2005: 349.

Conclusion

Starting Point

# Some background information about Germany

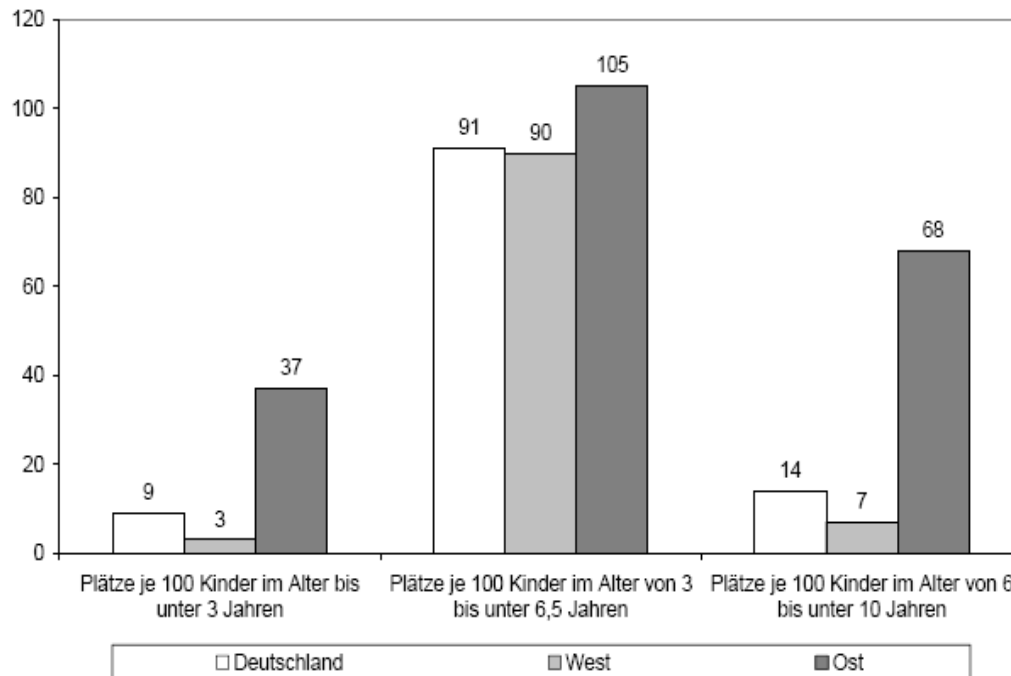
Some Background Information about Germany

## Day care places per 100 children for different age groups

The Project

Analyzing Methods

Exemplary (Preliminary) Results



Conclusion

Source: BMFSFJ 2005: 337.

Starting Point

# Some background information about Germany

Some Background Information about Germany

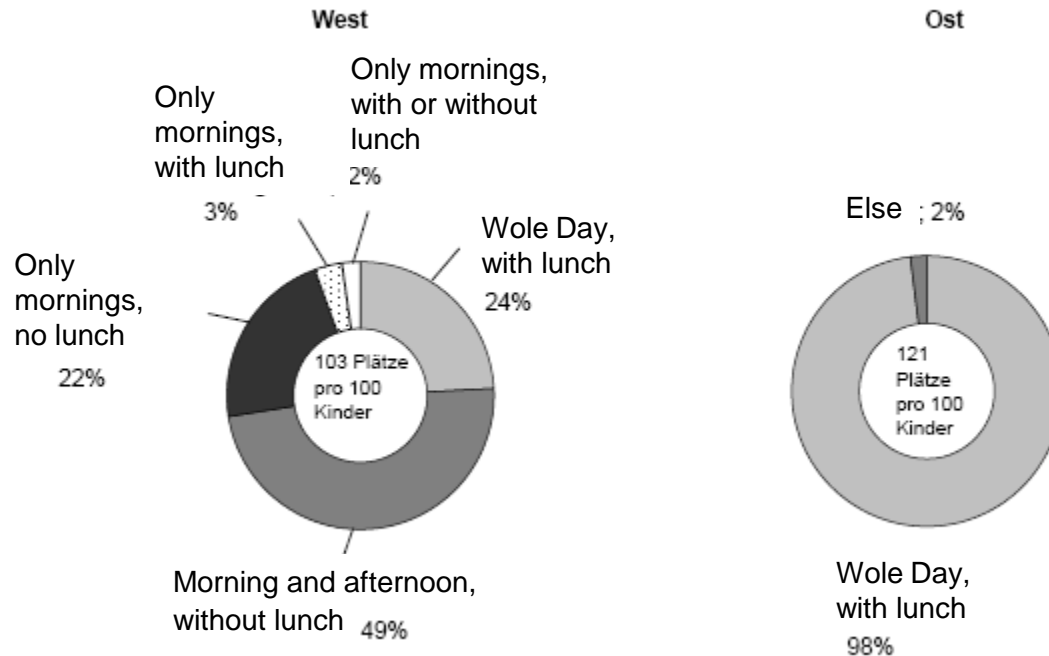
## Day care places for 3-5 year-old children by opening hours in %

The Project

Analyzing Methods

Exemplary (Preliminary) Results

Conclusion



Source: BMFSFJ 2005: 338.



Starting Point

# Some background information about Germany

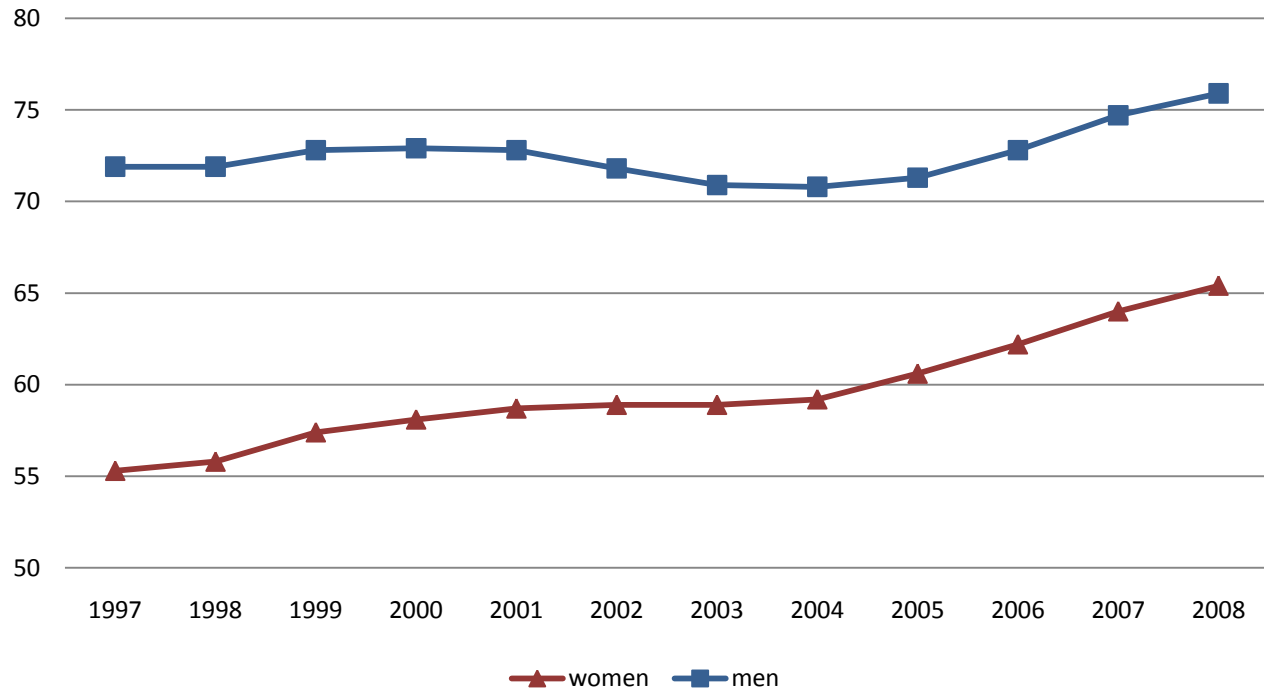
Some Background Information about Germany

## Labor force participation in %

The Project

Analyzing Methods

Exemplary (Preliminary) Results



Conclusion

Source: Eurostat 2010.

Starting Point

# Some background information about Germany

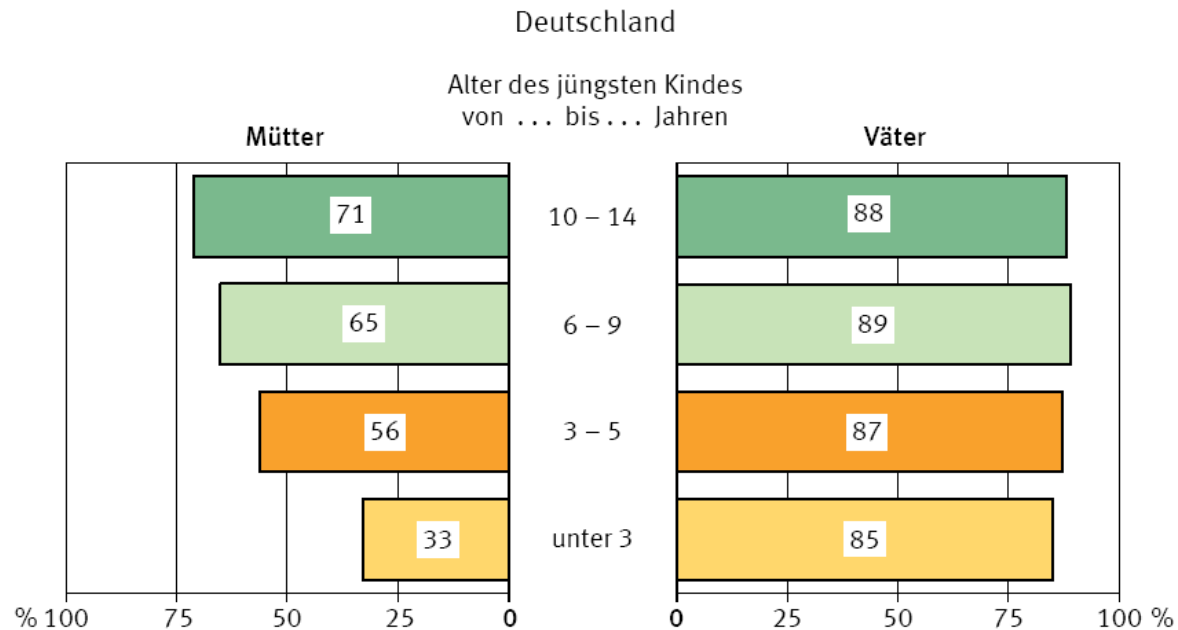
Some Background Information about Germany

## Labor force participation of parents by age of youngest child

The Project

Analyzing Methods

Exemplary (Preliminary) Results



1) Elternteile im erwerbsfähigen Alter (ohne vorübergehend Beurlaubte).

Conclusion

Source: Statistisches Bundesamt 2006: 9.

Starting Point

# Some background information about Germany

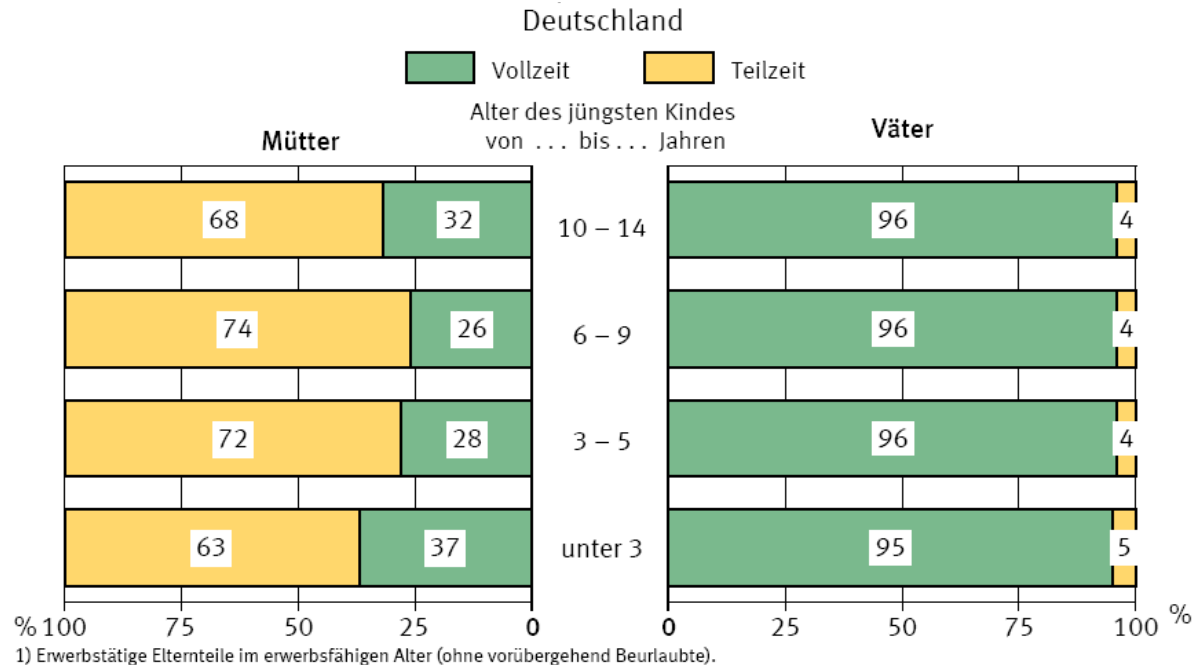
Some Background Information about Germany

## Full-/Part-Time rate of employed mothers/fathers by age of youngest child

The Project

Analyzing Methods

Exemplary (Preliminary) Results



Conclusion

Source: Statistisches Bundesamt 2006: 11.

Starting Point

# The project

Some  
Background  
Information  
about Germany

The Project

Analyzing  
Methods

Exemplary  
(Preliminary)  
Results

Conclusion

- “The Household Division of Domestic Labor as a Process. How does the division of housework change over the course of relationships?”
  - 56 interviews with 14 couples
  - Longitudinal design
  - Event-centered
    - 1<sup>st</sup> interview shortly before the birth of the first child, prospective design
    - 2<sup>nd</sup> interview about one year afterwards
      - Changes due to the birth
- Deeper insights by means of a longitudinal qualitative study

Starting Point

# Main questions of the project

Some  
Background  
Information  
about Germany

The Project

Analyzing  
Methods

Exemplary  
(Preliminary)  
Results

Conclusion

- Development of division of labor (household tasks, employment, childcare) during the transition to parenthood → explanation for changes and stability
- Understanding of decisions and interpretations of couples motivating or rationalizing traditionalization – even for well-educated couples
- Analysis of consistence between anticipated and realized division of labor after the birth
- Examination of rationales according to well-elaborated theories

Starting Point

# Aim of this presentation

Some  
Background  
Information  
about Germany

The Project

Analyzing  
Methods

Exemplary  
(Preliminary)  
Results

Conclusion

- Analyzing methods
  - Coding
  - Extracting information
  - Aggregation of data
  - Theories
- Exemplary advantage of the approaches
- Preliminary results

Starting Point

# Analyzing methods

Some  
Background  
Information  
about Germany

- Computer-aided analysis: MAXqda
  - Theoretical Coding
  - Open Coding

The Project

Analyzing  
Methods

Exemplary  
(Preliminary)  
Results

Conclusion

Liste der Texte

Texte	Anzahl
Interviewpaar 01_Welle 1	948
Trans_011	661
Trans_012	287
Interviewpaar 01_Welle 2	852
Int2_011	480

Begründung	14
Externalisierung	17
Anspruchsniveau	183
Berufliche Gründe	76
Finanzielle Gründe	181
Gelegenheit	73
Geschlechtsidentität	49
Gleichheit/Gerechtigkeit	53
Kompetenz	186
Normen und Werte	57
physische Aspekte	150
Pragmatismus	85
Rollen	73
Routine	104
Sozialisation	18
Spezialisierung	20
unhinterfragt	133
Verhandlung	70
Vorlieben	422
Zeit	440
Empfindungen, Gefühle	29
Abhängigkeit	3
Mutter-/Vatergefühle	3
Liebe	5
schlechtes Gewissen	14
Freude	135
Sicherheit/Unsicherheit	86
des Bereitseins, der Reife	4
Sorgen	76
Enttäuschung	39

Text: Interviewpaar 11\_Welle 2\Int2\_112

14 B:  
15 .. Es hat sich dahingehend, ja für mich, eigentlich nichts geändert.

16 I:  
17 Also auch der , der Umfang ist das alles, der Job an sich ist das gleiche. Wie sieht's mit dem Umfang aus ?

18 B:  
19 Ja, also ich hatte letztes Jahr irgendwie so die Hoffnung, dass das irgendwie sonach dem Hausbau dann auch beruflich sich das Ganze mal ein bisschen straffer kann und ein bisschen mehr Zeit hab, das war ein echter Trugschluss.

20 I:  
21 Ja ?

22 B:  
23 Das war ein voller (betont) Trugschluss, das ist immer noch, also ich hab, ja um Weihnachten rum, hab ich dann irgendwann von der K mir anhören müssen, lassen müssen, dass, dass es doch schon gut war, dass sie eine problemlose Schwangerschaft gehabt hat, weil ich eh nie da war. Also ich eh nie so richtig wirklich greifbar war und das zieht sich jetzt durch. Es ist jetzt im Moment eigentlich eher noch wieder mehr geworden. Ich hab eigentlich heut Nachmittag, hätte ich mir eigentlich frei nehmen wollen, weil ich bevor wir hier das Interview machen, eigentlich (betont) noch mal schnell in die Stadt wollte, weil wir am Samstag in Urlaub fahren, und ein paar Besorgungen machen. Das hat sich heute Früh um 7.00 Uhr dann geändert, einen Anruf bekommen, 16.00 Uhr noch eine Sitzung bis 19.00 Uhr. ich

..Vergangenheit

..(An-) Bewertung

..Frau

Pläne, Wünsche, Konflikte, Problemstellungen

Vereinbarkeit von

Veränderung

..Einkaufen, Besorgungen

..Urlaub

..Zeit

Flexibilität



Starting Point

# Analyzing methods

Some  
Background  
Information  
about Germany

The Project

Analyzing  
Methods

Exemplary  
(Preliminary)  
Results

Conclusion

- Computer-aided analysis: MAXqda
  - Theoretical Coding
  - Open Coding
- Combination of different approaches:
  - Qualitative Content Analysis (Mayring)
  - Identification of types on the basis of the single cases (Kelle/Kluge)
  - Confrontation of theories with the qualitative data (Hopf)

Starting Point

# Example for summarizing content analysis

Some  
Background  
Information  
about Germany

The Project

Analyzing  
Methods

Exemplary  
(Preliminary)  
Results

Conclusion

- Theoretical Consideration: Importance of analyzing different tasks separately: household, employment, childcare and to distinguish between different chores in each field
- MAXqda: Looking at the codings concerning i.e. cooking of one couple
- For each chore and field:
  - Reduction of information
  - Summary of information
  - Interpretation

# Example: Cooking

<i>Specification and execution by man/woman (said by: woman/man)</i>	<i>Rationale (said by man/woman)</i>	<i>Key for rationale</i>	<i>Conflicts (said by woman/man)</i>	<i>Questions/remarks</i>	<i>Interpretations</i>
Daily decision of couple who shall cook; warm meals often in the evening; couple often goes out for food, at least weekly (woman); normally: cooking is done by the man, sometimes by the woman (man)	Man cooks if the woman has no time due to further education; if the man has no time, the couple eats out (woman); If the man does not have business appointments, he cooks; due to his skills and the woman's lack of skills in cooking, he often cooks (man)	time (both); professional reasons (woman); routine, skills (man)	none	Only woman reports externalization of cooking.	Both describe different divisions: Man says, that he normally cooks and his wife only occasionally due to skills. In contrast, the woman reports that the couple decides daily who cooks and that the man cooks if she cannot due to professional reasons. Only she mentions externalization of cooking --> Difficult to interpret who cooks in which share.

Starting Point

# Example for identification of types on the basis of single cases

Some  
Background  
Information  
about Germany

- Each couple is analyzed based on the summaries generated with the method of content analysis  
→ good overview and simplifications for classification

The Project

- Typus: combination of characteristics
- Different foci → different typifications

Analyzing  
Methods

Exemplary  
(Preliminary)  
Results

Conclusion

Starting Point

# Example for identification of types on the basis of single cases

Some Background Information about Germany

		Household tasks				
		Only M <sup>1</sup>	M > F <sup>2</sup>	M = F <sup>3</sup>	M < F <sup>4</sup>	Only F <sup>5</sup>
The Project	Employment	Only M <sup>1</sup>				
		M > F <sup>2</sup>			02, 04, 09	
		M = F <sup>3</sup>		01, 03, 07, 08, 12, S09	10, 11, S02, S06	
		M < F <sup>4</sup>			05	
		Only F <sup>5</sup>				

The Project

Analyzing Methods

Exemplary (Preliminary) Results

Conclusion

- <sup>1</sup> Only M: Man's Proportion > 90%; <sup>2</sup> M>F: Man's Proportion 60-90%;
- <sup>3</sup> M=F: Man's Proportion 40-60%; <sup>4</sup> M<F: Man's Proportion 10-40%;
- <sup>5</sup> Only F: Man's Proportion < 10%

Starting Point

# Example for identification of types on the basis of single cases

Some Background Information about Germany

		Household tasks						
		Only M <sup>1</sup>	M > F <sup>2</sup>	M = F <sup>3</sup>	M < F <sup>4</sup>	Only F <sup>5</sup>		
The Project	Employment	Only M <sup>1</sup>				04, 08, S02	S09	
		M > F <sup>2</sup>				02, 04, 09 01, 05, 07, S06		
		M = F <sup>3</sup>			01, 03, 07, 08, 12, S09	10, 11, S02, S06		
		M < F <sup>4</sup>					02	11
		M < F <sup>4</sup>				05		
		Only F <sup>5</sup>						

The Project

Analyzing Methods

Exemplary (Preliminary) Results

Conclusion

- <sup>1</sup> Only M: Man's Proportion > 90%; <sup>2</sup> M>F: Man's Proportion 60-90%;  
<sup>3</sup> M=F: Man's Proportion 40-60%; <sup>4</sup> M<F: Man's Proportion 10-40%;  
<sup>5</sup> Only F: Man's Proportion < 10%

Starting Point

# Example for identification of types on the basis of single cases

Some Background Information about Germany

		Household tasks					
		Only M <sup>1</sup>	M > F <sup>2</sup>	M = F <sup>3</sup>	M < F <sup>4</sup>	Only F <sup>5</sup>	
The Project	Employment	Only M <sup>1</sup>				04, 08, S02	S09
		M > F <sup>2</sup>			12	02, 04, 09 01, 05, 07, S06	
		M = F <sup>3</sup>			01, 03, 07, 08, 12, S09 03, 09	10, 11, S02, S06 02, 10	11
		M < F <sup>4</sup>				05	
		Only F <sup>5</sup>					
		Only F <sup>5</sup>					

The Project

Analyzing Methods

Exemplary (Preliminary) Results

Conclusion

<sup>1</sup> Only M: Man's Proportion > 90%; <sup>2</sup> M>F: Man's Proportion 60-90%;  
<sup>3</sup> M=F: Man's Proportion 40-60%; <sup>4</sup> M<F: Man's Proportion 10-40%;  
<sup>5</sup> Only F: Man's Proportion < 10%

Starting Point

# Example for identification of types on the basis of single cases

Some  
Background  
Information  
about Germany

Types:

The Project

Analyzing  
Methods

Exemplary  
(Preliminary)  
Results

Conclusion

- Traditionalization: Man invests more in labor market and less in housework after birth, woman acting vice-versa
  - Moderate traditionalization: only small differences
  - Strong traditionalization: almost full polarization
- Constant equality: both partners invest almost equal shares in labor market participation and housework after birth
- Equalization: moderate traditional division is transformed in almost equal proportions concerning labor market and housework



Starting Point

# Example for identification of types on the basis of single cases

Some  
Background  
Information  
about Germany

The Project

Analyzing  
Methods

Exemplary  
(Preliminary)  
Results

Conclusion

- Benefits:
  - Concentration of the material
  - Helpful for further research
  - Theoretical concepts
  - Visibility of empirical regularity
  - Combination of different typifications
- Risks, restrictions:
  - Practical and theoretical usability
  - Selection of theoretical/practical important categories

Starting Point

# Confrontation of theories with the qualitative data – Example: Becker

Some Background Information about Germany

- Hypotheses according Gary S. Becker's New Home Economics:

The Project

- Spouse with higher education/higher income → time only/mostly in the market; spouse with greater comparative advantage in the household → time only/mostly there.

Analyzing Methods

- At most one spouse: investment in both spheres.
- Polar division of labor.
- Both spouses with same resources: prediction impossible.
- Pregnancy: investment in household-related human capital.

Exemplary (Preliminary) Results

Conclusion

Starting Point

# Confrontation of theories with the qualitative data – Example: Becker Exemplary test with Couple S02

Some Background Information about Germany

The Project

- 1<sup>st</sup> wave: Man is working fulltime (according to contract 38 hours a week, normally more than 40 hours a week) in a dairy as shift supervisor, net income: 2000-3000€;
- Woman is working fulltime (shift work) in a children's home as a team leader, net income: 1000-1500€

Analyzing Methods

## Assumptions according to Becker:

- Not efficient if both spouses spend time in market and household.
- Woman: higher education (Fachabitur vs. Mittlere Reife).
- Man: more income.
- Only the woman should do the household tasks.

Exemplary (Preliminary) Results

Conclusion

Starting Point

# Confrontation of theories with the qualitative data – Example: Becker

Some Background Information about Germany

## De facto division of labor:

- Woman: more time in household chores.
- Explanation via attitudes, socialization, time

The Project

## Assumptions for the time after the child's birth

- Woman: more time for household tasks in 1<sup>st</sup> wave
- Pregnancy as investment in household specific human capital for the woman
- Man: more income in 1<sup>st</sup> interview

Analyzing Methods

Exemplary (Preliminary) Results

- Man specializes on the market, woman does all housework and if it is efficient, she will be employed, too.  
OR: Woman specializes on the household and man is employed and perhaps, he will do some household chores.

Conclusion

Starting Point

# Confrontation of theories with the qualitative data – Example: Becker

Some Background Information about Germany

## De facto division of labor after the birth of the first child

The Project

- Man still full-time employed. Woman in parental leave.
- Woman: about 80% of household chores.
- Man: about 15-30% of childcare. Only woman: going to a baby group and baby massages.
- Explanation: financial reasons, attitudes, specialization
- After the birth division according to Becker's New Home Economics, rationale in part economic.

Analyzing Methods

Exemplary (Preliminary) Results

Conclusion

Starting Point

# Conclusion

Some  
Background  
Information  
about Germany

The Project

Analyzing  
Methods

Exemplary  
(Preliminary)  
Results

Conclusion

## Methods:

- Combination of different approaches with diverse potentials
- Collection of different aspects with the methods
- Choice of method on basis of research question

Starting Point

# Conclusion

Some  
Background  
Information  
about Germany

## Preliminary results:

- Most cases:
  - Some form of traditionalization
  - Arrangement after birth not far from anticipation
- Polar division often rationalized by economic arguments, but also: never questioned, gender roles
- Equal division often rationalized by egalitarian values, concept of active fatherhood/ motherhood and job as combinable spheres
- Women with polar division often not happy – even if they planned polar division

The Project

Analyzing  
Methods

Exemplary  
(Preliminary)  
Results

Conclusion

Starting Point

# Conclusion

Some  
Background  
Information  
about Germany

The Project

Analyzing  
Methods

Exemplary  
(Preliminary)  
Results

Conclusion

## Next steps:

- Typification with more/other „variables“, i. e. rationales for arrangements
- Test of norm-based theories → See how good different theories explain the couples' situations
- Analysis of different chores, not only shares
- Analysis of satisfaction with arrangements
- Analysis of child care tasks and total amounts of work



Thank you!

[Anna.Dechant@ifb.uni-bamberg.de](mailto:Anna.Dechant@ifb.uni-bamberg.de)

# Report from the German INAP-Study Methods and Preliminary Results

Dipl.-Soz. Anna Dechant (ifb)

TransParent Workshop - Amsterdam, April 8-9 2010

Starting Point

# Literature

Some  
Background  
Information  
about Germany

- Becker, G. S. (1998): A Treatise on the Family. Cambridge: Harvard University Press.
- Bundesministerium für Familie, Senioren, Frauen und Jugend (2004): Bericht über die Auswirkungen der §§ 15 und 16 Bundeserziehungsgeldgesetz.
- Bundesministerium für Familie, Senioren, Frauen und Jugend (2005): Gender-Datenreport. 1. Datenreport zur Gleichstellung von Frauen und Männern in der Bundesrepublik Deutschland.
- Ebener, J. (2002): Mutterschutz Erziehungsgeld Elternzeit. Saarbrücken: Arbeitskammer des Saarlandes.

The Project

- Eurostat (2010): <http://epp.eurostat.ec.europa.eu/guip/themeAction.do> (30-03-2010).
- Grunow, D.; Schulz, F.; Blossfeld, H.-P. (2007): Was erklärt die Traditionalisierungsprozesse häuslicher Arbeitsteilung im Eheverlauf: soziale Normen oder ökonomische Ressourcen? Zeitschrift für Soziologie 36/3. S. 162-181.

Analyzing  
Methods

- Hopf, C. (1993): Zum Verhältnis von innerfamilialen sozialen Erfahrungen, Persönlichkeitsentwicklung und politischen Orientierungen. Dokumentation und Erörterung des methodischen Vorgehens in einer Studie zu diesem Thema. Hildesheim.

Exemplary  
(Preliminary)  
Results

- Kelle, U.; Kluge, S. (1999): Vom Einzelfall zum Typus. Fallvergleich und Fallkontrastierung in der qualitativen Sozialforschung. Opladen: Leske + Budrich.
- Mayring, P. (2008): Qualitative Inhaltsanalyse. Grundlagen und Techniken. Weinheim: Beltz.
- Statistisches Bundesamt (2006): Leben und Arbeiten in Deutschland. Sonderheft 2: Vereinbarkeit von Familie und Beruf Ergebnisse des Mikrozensus 2005. Wiesbaden.
- Statistisches Bundesamt, Gesis-Zuma, WZB (2008): Datenreport 2008. Bonn: bpb.

Conclusion

- Statistisches Bundesamt (2009): <http://www.destatis.de/jetspeed/portal/cms/Sites/destatis/Internet/DE/Content/Statistiken/Bevoelkerung/AktuellGeburtenentwicklung,templateId=renderPrint.psml> (30-03-2010).